

Series Spec Sheet

SWN

"NOAH" WET LOCATION ANTI VANDAL REMOTE

Single or double

6V, 12V & 24V lamps in LED & Quartz

The SWN series of wet location anti vandal remotes is designed to perform in extreme environments. The single or double lamp assemblies are completely protected from the elements within a fully gasketed polycarbonate housing. Available in 6 V, 12 V or 24 V models, utilizing quartz halogen or LED (bi-pin based) lamps.

FEATURES AND SPECIFICATIONS

- **Electrical and circuitry**
 - 6 VDC, 12 VDC or 24 VDC
 - Quartz halogen lamps - bi-pin based
 - LED lamps - bi-pin based
- **Circuitry - CEREBRUM**
 - This unit can be connected to Cerebrum's smart battery unit. Please view the Cerebrum brochure for more details on this technology
- **Mechanical**
 - Polycarbonate enclosure is fully gasketed around lens and canopy to prevent water infiltration
 - Stainless steel tamper proof screws and bits
 - Wet location
 - Lamps are fully adjustable
 - Fully gasketed housing
 - Available in white and black
 - Universal spider knockout pattern stamped into backplate for junction box mounting
 - For surface or suspended conduit mount use accessory JB031
- **Ambient Temperature**
 - -35 °C to +40 °C
- **Approvals**
 - CSA Certified to C22.2 #141-15
 - CSA Certified type 2, 3, 3R, 4, 4X, 5, 12 or 12 K
 - CSA Certified to NSF 2
 - IP66
- **Compliance**
 - Meets requirements of ICES-005

OVERVIEW

Light source	LED or Quartz halogen
Input voltage (VDC)	6, 12, 24



cerebrum
compatible



LED
fixture



ICES
005



SANITATION
NSF/ANSI 2

For complete warranty details, please see our terms and conditions on our website.

TYPICAL SPECIFICATION



TYPICAL SPECIFICATION

Remote head shall be completely protected from the elements within a fully gasketed polycarbonate housing, be fully adjustable both tilt and swivel and have a universal spider knockout pattern stamped into back plate for junction box mounting. The SWN shall be 0 V, 0 W, 0 lumens. The MR16 LED's lamps shall be fully integrated in the molded shell to ensure extended life and maximum performance. The remote fixtures shall be certified to CSA 22.2 No.141-15, CSA Certified type 2, 3, 3R, 4, 4X, 5, 12, CSA Certified to NSF 2 and be ICES005 compliant. The remote unit shall be Stanpro model: SWN _____

Data is based upon tests performed in a controlled environment. Actual performance can vary depending on operating conditions.
All products are subject to change or may be discontinued any time without notice.

ORDERING GUIDE - LED

Series	Nbr of heads	Volts (VDC operational)	Watts (W)	Lamp type	Color
SWN	1 - Single head	06-24 - 6VDC to 24VDC operational	4W - 4 watts	LR - LED	BK - Black WH - White
	2 - Double head		5W - 5 watts	LA - LED	
		12-24 - 12VDC to 24VDC operational	6W - 6 watts	LA - LED	
			7W - 7 watts	LA - LED	
	1 - Single head	CER - Cerebrum driver	5W - 5 watts	LA - LED	
	2 - Double head	CER - Cerebrum driver	2.5W - 2.5 watts 5W - 5 watts		

ORDERING GUIDE - INCANDESCENT

Series	Nbr of heads	Volts (VDC)	Lamp type	Color
SWN	1 - Single head	06 - 6	See lamp selection chart	BK - Black
	2 - Double head	24 - 24		WH - White

INCANDESCENT LAMP SELECTION

	6 V	24 V
Quartz halogen	10WQ	-

LEXAN GUARD

	Part number	Dimensions (in)
Wall Mount	PGD104	14 x 7.25 x 7.5

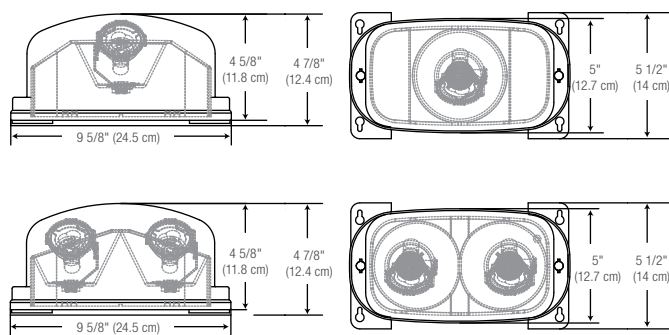
LUMEN TABLE

Watts	Lumens
4W LR	388
5W LA	435
6W LA	507
7W LA	652

ACCESSORIES (ORDER SEPARATELY)

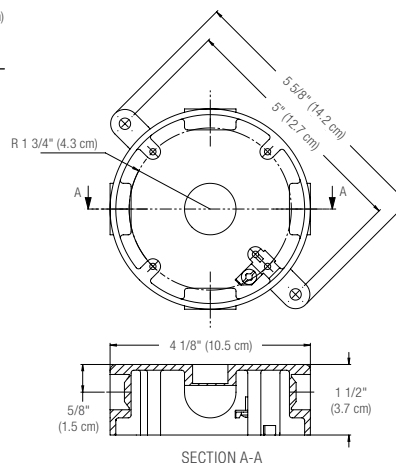
Part number	Type
JB031	4-inch octagonal PVC box with 5 x 1/2 inch threaded hubs

DIMENSIONS



SPACING GUIDE

Mounting height	Spacing center to center (ft)			
	4WLR	5WLA	6WLA	7WLA
8 ft	76	81	94	108
10 ft	79	79	93	106
15 ft	66	62	82	96
20 ft	53	49	73	87



Data is based upon tests performed in a controlled environment. Actual performance can vary depending on operating conditions. All products are subject to change or may be discontinued any time without notice.